

Güntner S-GGHN 045.2H/27-ANW50/12P.E

Specifications

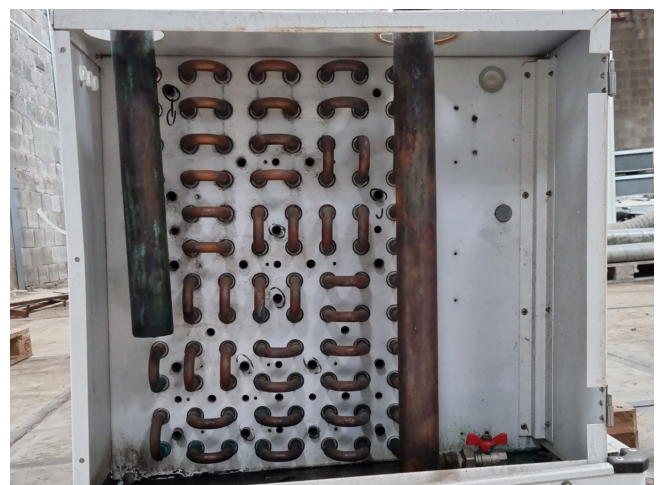
Marka	Güntner
Typ	S-GGHN 045.2H/27-ANW50/12P.E
Ogólna wydajność w kW	34,9
Czynnik chłodzący	Glycol
Liczba wentylatorów	2
Średnica wentylatora mm	7
Rozmrażanie	None
Przepływ powietrza w m ³ /h	9.680
Rozmiary	2420x900x630 mm (LxWxH)
Uwagi	Y.o.b. 2010
Volume	32 dm ³
Waga	138 kg
Stock	3

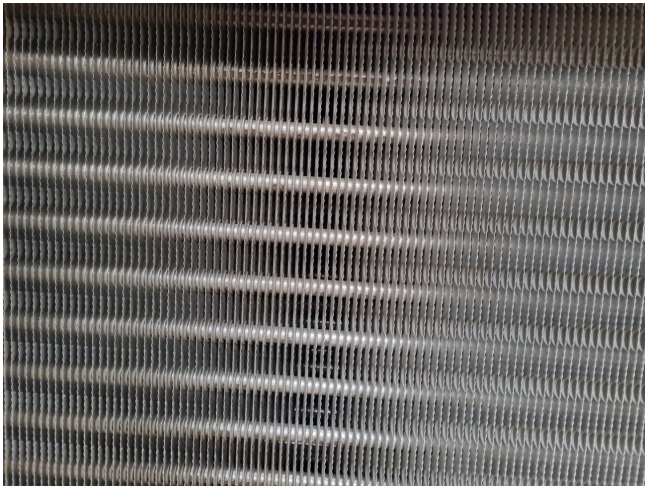


Description

Used Güntner S-GGHN 045.2H/27-ANW50/12P.E

Used Güntner S-GGHN 045.2H/27-ANW50/12P.E Glycol evaporator. Complete with 2 Ziehl-Abegg fans - 50 Hz - 0,30/0,16 kW - 1400/1180 RPM - Diameter 450 mm and a total airflow of 9.680 m³/h.
*All components of this used evaporator will be tested on good working, leak free condition (electro engines), coils, bearings) Choosing HOSBV means buying with warranty. We perform a industrial cleaning and rust spots will be covered. Also, we can arrange your shipment.





GGHN - 2 Ventilatoren - 2 Fans												
Typ Type	Abströmvolumen Air volume	Nichtströmicht Air weight	Abmessungen Dimensions								Ablauf G-Gewinde flach- dichtend Dean G-thread flat sealing DIN-ISO 228-1	
			L	B	H	E	F	C	M	S		A
040.2D/24-ANW50	10,6	75	1770	540	550	1360	425	210	870	580	400	G1 1/4"
040.2F/24-ANW50	15,9	101	1770	815	560	1360	700	210	870	855	400	G1 1/4"
045.2D/24-ANW50	16,2	97	2250	665	650	1780	545	240	970	700	500	G1 1/4"
045.2E/24-ANW50	20,2	121	2250	665	650	1780	545	240	970	700	500	G1 1/4"
050.2D/24-ANW50	21,0	131	2470	645	750	2000	545	240	1070	700	550	G1 1/4"
050.2E/24-ANW50	24,7	150	2470	645	750	2000	545	240	1070	700	550	G1 1/4"
050.2F/24-ANW50	31,4	184	2470	825	760	2000	700	240	1070	855	550	G1 1/4"
071.2D/24-AND50	35,7	313	3460	900	955	2720	715	380	1350	885	700	G2"
071.2E/24-AND50	44,7	342	3460	900	955	2720	715	380	1350	885	700	G2"
071.2F/24-AND50	53,6	392	3460	1050	965	2720	865	380	1350	1040	700	G2"
080.2D/24-AND50	55,5	424	3960	910	1250	3200	715	380	1650	890	700	G2"
080.2E/24-AND50	69,3	470	3950	910	1250	3200	715	380	1650	890	700	G2"
080.2F/24-AND50	83,2	580	3950	1060	1260	3200	865	380	1650	1040	700	G2"
040.2F/27-ANW50	15,9	92	1770	815	560	1360	700	210	870	855	400	G1 1/4"
040.2H/27-ANW50	21,2	100	1770	815	560	1360	700	210	870	855	400	G1 1/4"
071.2D/27-ANW50	20,2	108	2250	665	650	1780	545	240	970	700	500	G1 1/4"
045.2E/27-ANW50	24,3	125	2250	665	650	1780	545	240	970	850	500	G1 1/4"
045.2F/27-ANW50	32,3	138	2250	815	660	1780	700	240	970	850	500	G1 1/4"
050.2F/27-ANW50	29,9	154	2470	825	760	2000	700	240	1070	855	550	G1 1/4"
050.2H/27-ANW50	41,9	184	2470	825	760	2000	700	240	1070	855	550	G1 1/4"
071.2E/27-AND50	44,7	279	3460	900	955	2720	715	380	1350	885	700	G2"
071.2F/27-AND50	53,6	357	3460	1050	965	2720	865	380	1350	1040	700	G2"
071.2H/27-AND50	71,5	387	3460	1050	965	2720	865	380	1350	1040	700	G2"
080.2E/27-AND50	69,3	425	3950	910	1250	3200	715	380	1650	890	700	G2"
080.2F/27-AND50	83,2	483	3950	1060	1260	3200	865	380	1650	1040	700	G2"
080.2H/27-AND50	111,0	531	3950	1060	1260	3200	865	380	1650	1040	700	G2"
040.2H/210-ANW50	21,2	100	1770	815	560	1360	700	210	870	855	400	G1 1/4"
045.2E/210-ANW50	20,2	103	2250	665	650	1780	545	240	970	700	500	G1 1/4"

GGHN - 2 Ventilatoren - 2 Fans																
Typ Type	Leistung Capacity	Volumenstrom Volume flow rate	Silbestritt Brine outlet	Fläche Surface	Luftvolumenstrom Air volume flow	Wärmeleistung ohne Strahler Air flow without Strainer	Wärmeleistung mit Strahler Air flow with Strainer	Schalldruck Sound pressure	Kältebräger / Sole Coolant / Brine	Anschlüsse Connections				El. Abtauheizung El. defrost		
										Ein Inlet	Aus Outlet	Block Block	Tropfwanne Drip tray	W W	W W	W W
040.2D/24-ANW50	17,4	4,7	0,3	65,4	6120	12	27	55	35,0	35,0	3750	1200	4,95	1 x A	0,43	1 x E
040.2F/24-ANW50	18,2	2,5	3,7	98,0	9620	11	26	55	35,0	35,0	6250	1700	7,95	1 x B	0,44	1 x E
045.2D/24-ANW50	23,8	3,8	2,7	102,6	10220	17	36	59	35,0	35,0	4500	2300	6,80	1 x B	0,59	1 x E
045.2E/24-ANW50	30,7	6,3	1,4	128,3	9720	16	35	59	42,0	42,0	6000	2300	8,30	1 x B	1,01	1 x E
050.2D/24-ANW50	29,6	5,0	2,4	134,5	13300	21	41	59	42,0	42,0	7000	2400	9,40	1 x B	1,03	1 x E
050.2E/24-ANW50	38,8	6,9	2,1	168,2	12940	21	39	59	54,0	54,0	8750	2400	11,15	1 x B	1,05	1 x E
050.2F/24-ANW50	43,5	7,9	2,0	201,8	12600	20	37	59	54,0	54,0	10500	3600	14,10	1 x B	1,07	1 x E
071.2D/24-AND50	54,5	8,6	2,7	235,3	23520	35	64	57	54,0	54,0	12500	4500	17,00	2 x C	1,59	2 x G
071.2E/24-AND50	64,7	10,6	2,6	294,1	22460	35	63	57	54,0	54,0	15000	4500	19,50	2 x C	1,61	2 x G
071.2F/24-AND50	79,9	12,5	2,4	352,9	21580	34	61	57	64,0	64,0	17500	4500	22,00	2 x C	1,64	2 x G
080.2D/24-AND50	90,1	16,5	2,0	369,0	35940	43	75	66	64,0	64,0	18000	6000	24,00	2 x C	2,69	2 x G
080.2E/24-AND50	108,5	20,6	1,8	461,3	34560	42	73	66	76,1	76,1	24000	6000	30,00	3 x C	2,71	2 x G
080.2F/24-AND50	123,1	24,7	1,5	553,6	33440	41	71	66	88,9	88,9	27000	6000	33,00	3 x C	2,72	2 x G
040.2F/27-ANW50	15,7	2,5	2,8	57,7	6200	13	27	55	35,0	35,0	6250	1700	7,95	1 x B	0,43	1 x E
040.2H/27-ANW50	21,5	4,6	1,2	76,9	5860	12	26	55	42,0	42,0	7500	1700	9,20	1 x B	0,43	1 x E
045.2E/27-ANW50	23,9	4,8	1,6	75,5	10640	17	39	59	42,0	42,0	6000	2300	8,30	1 x B	0,98	1 x E
045.2F/27-ANW50	28,0	5,7	1,5	90,6	10380	16	38	59	42,0	42,0	7500	3450	10,95	1 x B	0,99	1 x E
045.2H/27-ANW50	38,9	7,8	1,4	120,8	9680	15	36	59	54,0	54,0	10500	3450	13,95	1 x B	1,01	1 x E
050.2F/27-ANW50	35,1	6,3	2,1	118,7	13400	22	41	59	54,0	54,0	10500	3600	14,10	1 x B	1,01	1 x E
050.2H/27-ANW50	41,6	6,6	2,7	158,3	12840	21	39	59	54,0	54,0	15750	3600	19,35	2 x B	1,05	1 x E
071.2E/27-AND50	49,7	7,7	2,9	173,0	24400	35	65	57	54,0	54,0	15000	4500	19,50	2 x C	1,56	2 x G
071.2F/27-AND50	53,1	6,9	3,9	207,6	23780	35	64	57	54,0	54,0	17500	4500	22,00	2 x C	1,59	2 x G
071.2H/27-AND50	80,3	17,3	1,2	276,8	22380	35	61	57	76,1	76,1	22500	4500	27,00	2 x C	1,61	2 x G
080.2E/27-AND50	79,8	13,3	2,5	271,3	37040	44	76	66	64,0	64,0	24000	6000	30,00	3 x C	2,66	2 x G
080.2F/27-AND50	94,0	15,9	2,4	325,6	36340	43	75	66	76,1	76,1	27000	6000	33,00	3 x C	2,68	2 x G
080.2H/27-AND50	118,6	21,2	2,1	434,2	34420	42	73	66	88,9	88,9	36000	6000	42,00	4 x C	2,71	2 x G
040.2F/210-ANW50	13,5	2,5	2,0	41,6	6420	14	28	55	35,0	35,0	6250	1700	7,95	1 x B	0,42	1 x E
040.2H/210-ANW50	17,3	3,3	1,8	55,4	6000	13	27	55	42,0	42,0	7500	1700	9,20	1 x B	0,43	1 x E
045.2E/210-ANW50	20,0	4,8	0,8	54,4	11000	19	37	55	42,0	42,0	6000	2300	8,30	1 x B	0,96	1 x E